



K L O T E K S A  
T E X T I L E C L O T H E S

Apparel for export  
Outerwear ladies and man  
From sample to production order  
We implement your ideas!  
Create. We will do everything else!



# KLOTEKSA

---



## ECO DIRECTION AND SUSTAINABILITY

Oeko-Tex , REACH ( lining and accessories)

Natural shell fabrics (composition at least 50%)

Use of recycled fabric and linings

Our main sewing factory has POWERED BY GREEN certificate

We collect fabric waste for recycling





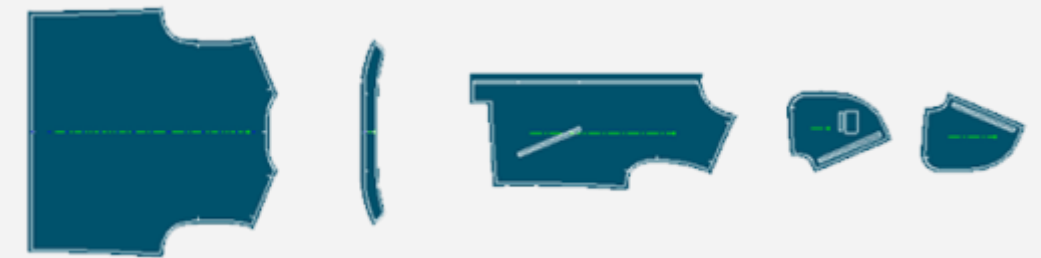
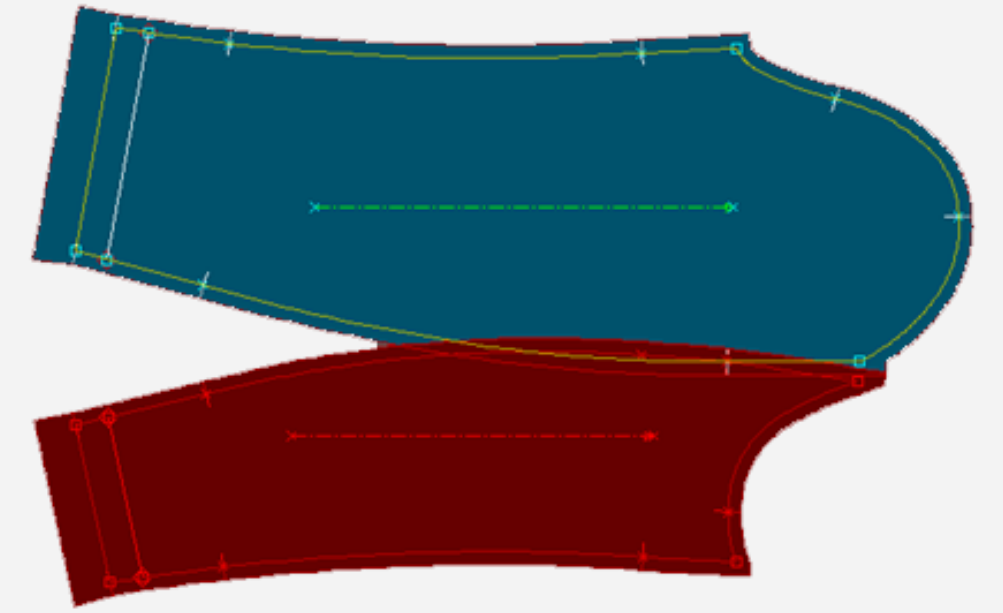
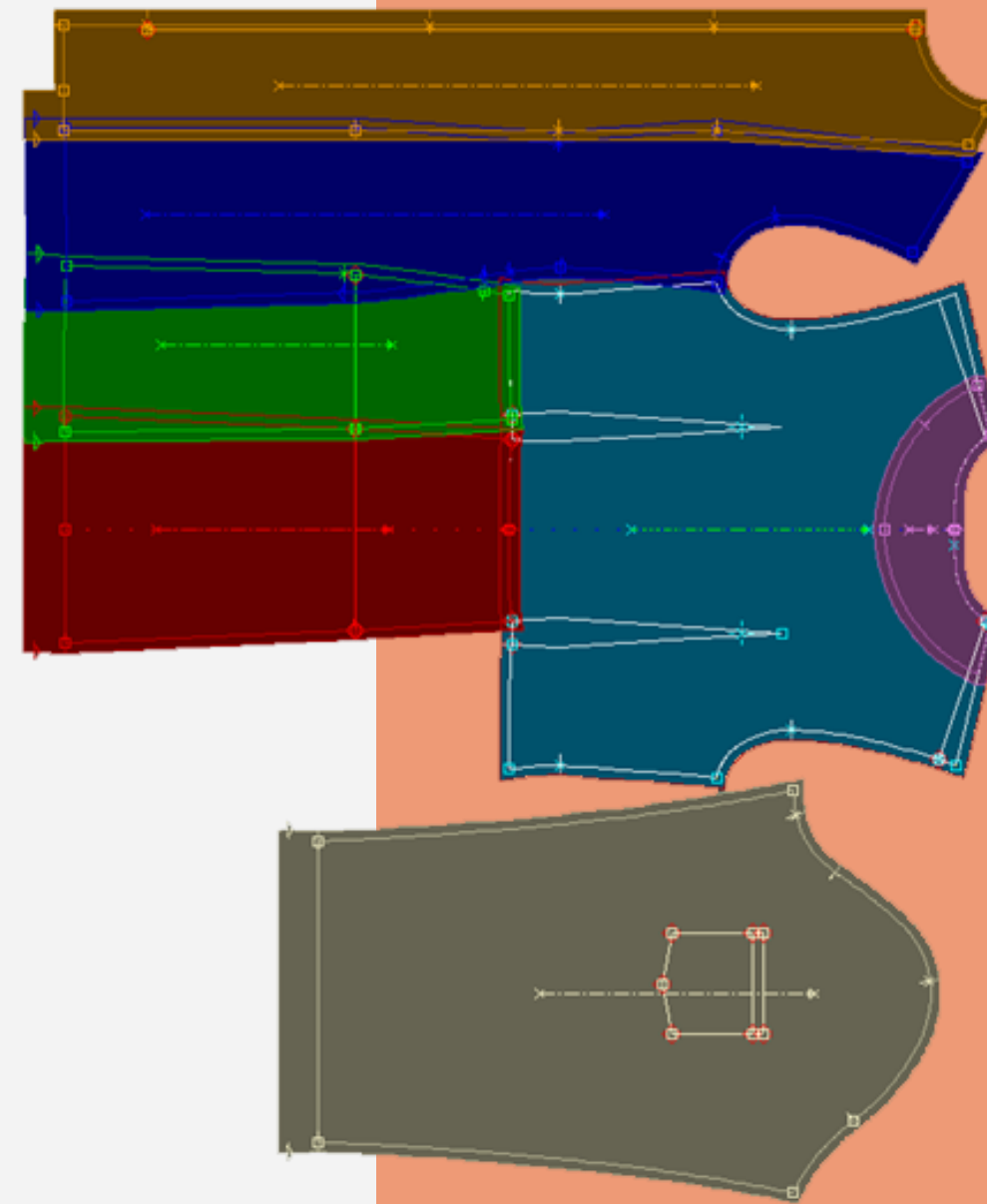
- Construction and patterns
- Sampling
- Purchase and preparation for production
- Production and export
- Transport and logistic



**SERVICES WE PROVIDE**

# CONSTRUCTION AND PATTERNS

- Conversion
- Construction
- Gradation
- Layouts for samples and bulk orders.







# SAMPLING



- PROTO samples
- Counter samples
- Sales Man samples
- Pre Production samples
- Shipment samples
- Price quotation garments each stage
- Solutions for product performance and implementation







# **PURCHASE AND PREPARATION FOR PRODUCTION**

- Order and purchase of fabric and lining
- Order and purchase of accessories
- Gradation and pattern layouts
- Full assembling of order for production
- Stocking if needed for the customer





- Production planning and agreement about delivery term
- Pre-production sample for approval
- Supervising in the production line
- Shipment sample from production for approval
- Final quality control before delivery

# PRODUCTION AND EXPORT





- Arrange the transport for delivery to customer's address
- Leading documents
  - invoice, packing list, CMR

## **TRANSPORT AND LOGISTIC**





# QUANTITIES

---

Sales man samples

---

**20-50 pcs**

Minimum order quantity

---

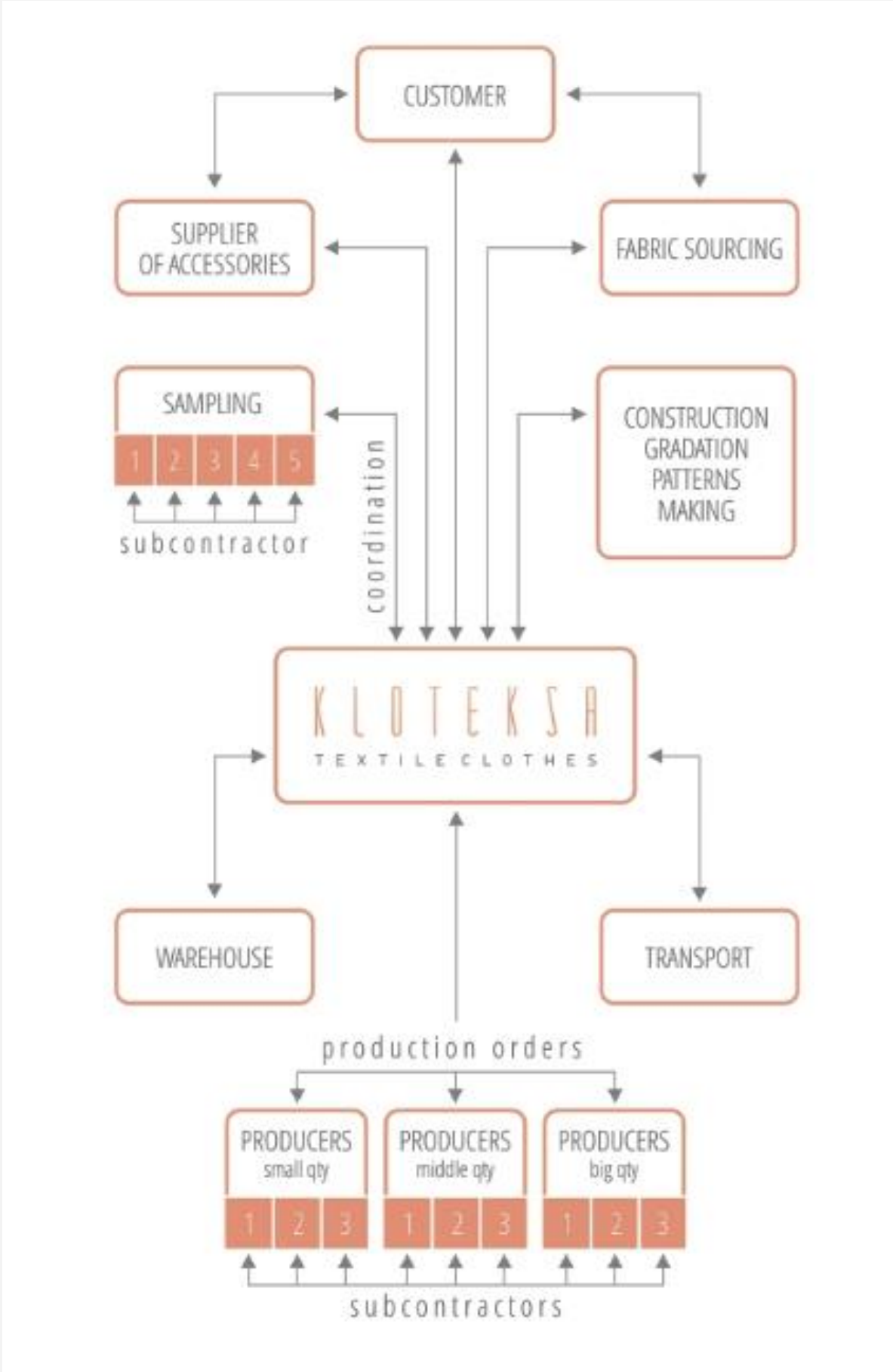
**200 pcs**





# PROCESS

• • •







# FASHION BRAND'S WHO TRUST US

Filippa K



ORES












## A perfect outer layer for seasonal transitions

### MATERIAL & CARE INSTRUCTIONS

100% Polyester (mech. recycled), 80% Cotton, 20% Linen

-  Do Not Bleach
-  Do Not Tumble Dry
-  Iron (Medium Heat)
-  Do Not Wash
-  Gentle Dry Clean Using PCE

- Dry clean only

### SUSTAINABILITY

This garment is designed to live a long life in your wardrobe, and to be donated for a second life after ownership.

- More Sustainable Fibre
- More Sustainable Trims

### PRODUCT ORIGIN

We believe that openness and transparency throughout the production chain plays an important role in modern, sustainable manufacturing.

Made in: Lithuania

Factory (Sub Contractor): Sevigia  
Address: Vytenio str. 50, 03229, Vilnius, Lithuania  
Number of employees: 118 (5 men/113 women)  
Visited by the Filippa K supply team

Vendor (Main Supplier): Kloteksa  
Address: Draugystės 15 B, 51228, Kaunas, Lithuania  
Number of employees: 7 (0 men/7 women)  
Visited by the Filippa K supply team





**STYLES  
MADE  
BY US**





**STYLES  
MADE BY  
US**





KLOTEKSA  
TEXTILE CLOTHES

UAB „Kloteksa“

Draugystės 15 B, Kaunas, LT-51228

Lithuania

info@kloteksa.lt

Tel. Nb. +37069987233

[Our website](#)